

**BASEMENT PLAN - EXISTING**



1954 UNIVERSITY AVE. W.  
ST. PAUL, MN 55104  
OFFICE: 651-207-1700  
FAX: 651-641-8641

**BASEMENT PLAN**

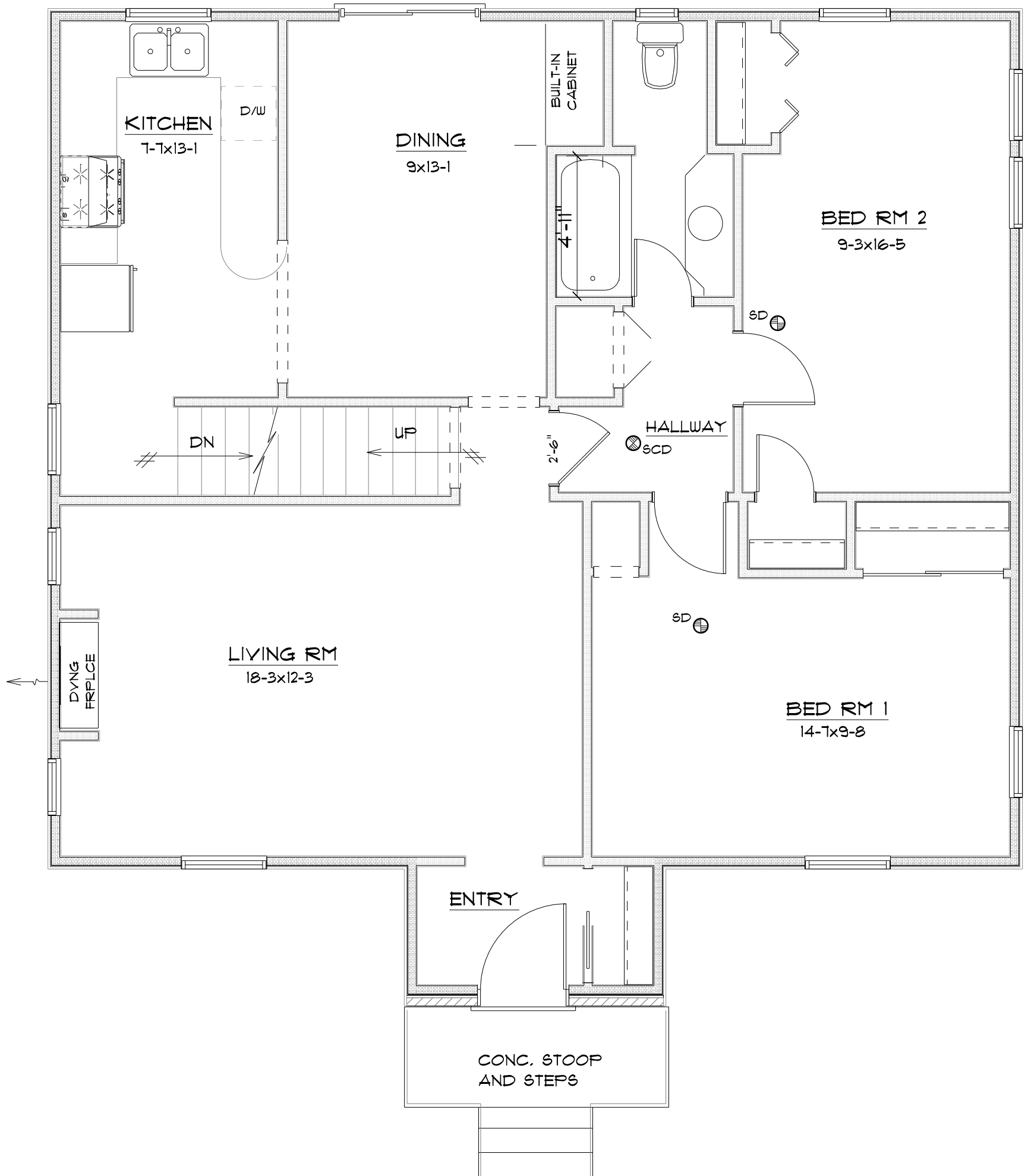
SINGLE FAMILY REHAB SITE: 1658  
MODEL: 3BR Cape Cod - Donation Rehab  
1025 7th Ave. S.  
So. St. Paul, MN 55075

DRAWN BY: J. HALL  
CHECKED BY:

DATE: 7-24-20  
PLOT DATE: Tuesday, July 28, 2020

SHEET

1 of 3



**FIRST FLOOR PLAN - EXISTING**

1/4" = 1'-0"



1954 UNIVERSITY AVE. W.  
ST. PAUL, MN 55104

OFFICE: 651-207-1700  
FAX: 651-641-8641

**FIRST FLOOR PLAN**

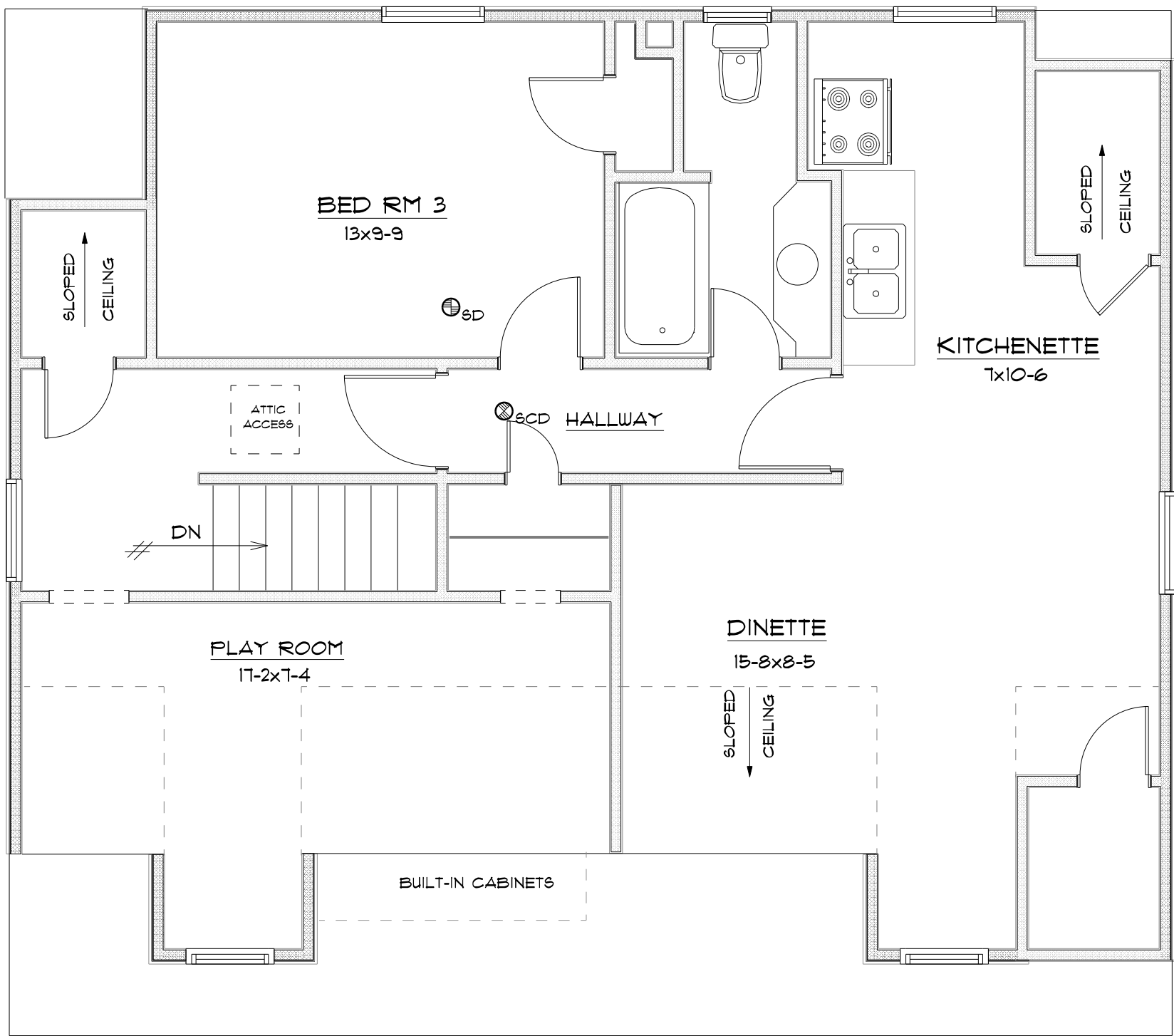
SINGLE FAMILY REHAB SITE: 1658  
MODEL: 3BR Cape Cod - Donation Rehab  
1025 7th Ave. S.  
So. St. Paul, MN 55075

DRAWN BY: J. HALL  
CHECKED BY:

DATE: 7-24-20  
PLOT DATE: Tuesday, July 28, 2020

SHEET

2 of 3



**SECOND FLOOR PLAN**  
 1/4" = 1'-0"



1954 UNIVERSITY AVE. W.  
 ST. PAUL, MN 55104  
 OFFICE: 651-207-1700  
 FAX: 651-641-8641

**SECOND FLOOR PLAN**

SINGLE FAMILY REHAB SITE: 1658  
 MODEL: 3BR Cape Cod - Donation Rehab  
 1025 7th Ave. S.  
 So. St. Paul, MN 55075

DRAWN BY: J. HALL  
 CHECKED BY:

DATE: 7-24-20  
 PLOT DATE: Tuesday, July 28, 2020

SHEET

3 of 3