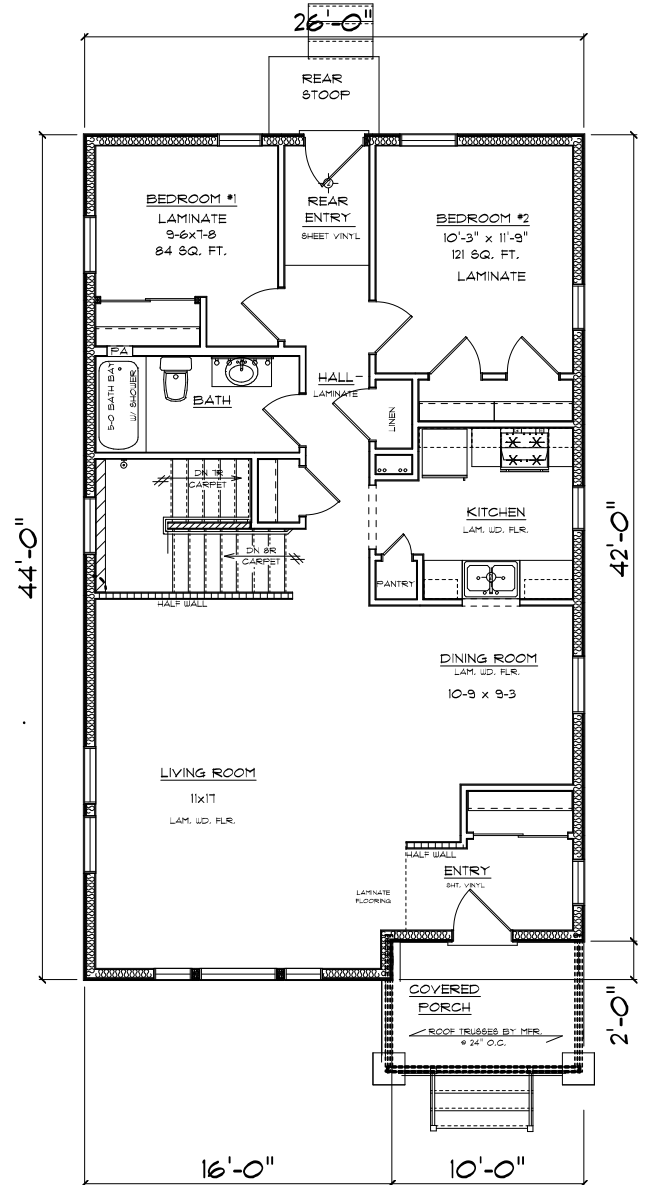


FOUNDATION PLAN



FIRST FLOOR PLAN



1954 University Ave. W.
St. Paul, MN 55104

OFFICE: 651-2071700
FAX: 651-641-8641

SINGLE FAMILY DWELLING
2719 IRVING AVE. N.
MINNEAPOLIS, MN 55411

MODEL: 27R4-2 1

BASEMENT UNFINISHED SQ. FT. = 1053
BASEMENT FINISHED SQ. FT. = 235
MAIN FLOOR SQ. FT. = 1288
TOTAL FINISHED SQ. FT. = 1523
TOTAL SQ. FT. = 2576